

A CYGNUS BUSINESS MEDIA PUBLICATION

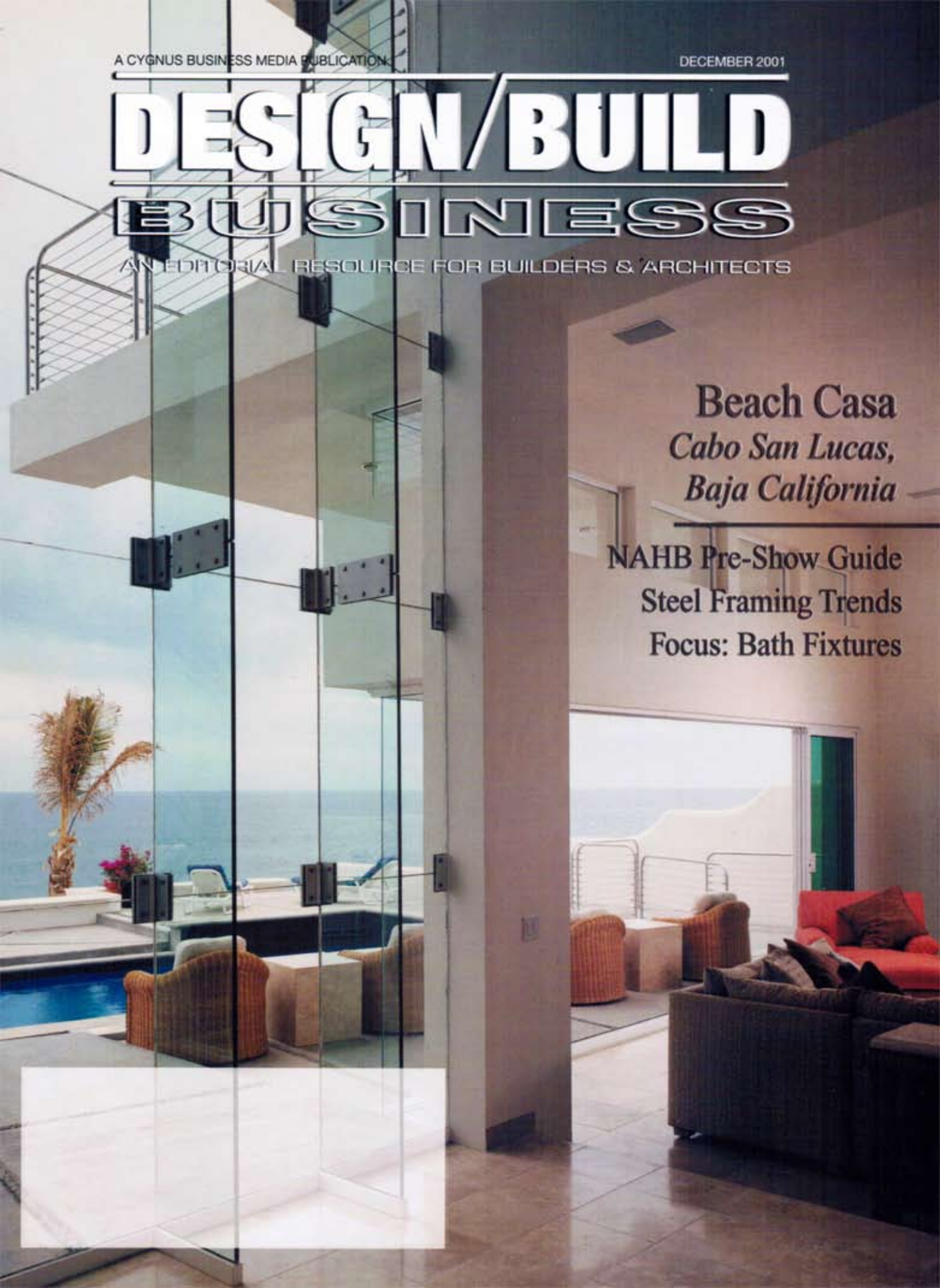
DECEMBER 2001

# DESIGN/BUILD BUSINESS

AN EDITORIAL RESOURCE FOR BUILDERS & ARCHITECTS

**Beach Casa**  
*Cabo San Lucas,  
Baja California*

**NAHB Pre-Show Guide**  
**Steel Framing Trends**  
**Focus: Bath Fixtures**



# TABLE OF CONTENTS

December 2001

14 ▼



24 ▲

## Features

### 14 Solar Style Beach Casa

An energy-autonomous beauty and get-away vacation home in Cabo San Lucas.

### 17 Steel Trends

Whitepoint Homes' Azalea Crossing offers the added benefits and security of steel without compromising design.

### 24 Bath Essentials

Tips on basic bath design, meeting the demands of today's homeowners and incorporating universal design features.

#### Show Report:

Panel at the Remodelers' Show shares how their businesses are affected by Sept. 11 on page 8.

## Departments

- 5 Accessibility Update
- 7 Letters
- 10 Business Practices
- 22 Product Focus: Bath Fixtures
- 30 Products and Literature
- 32 Advertiser Index

## Columns

- 4 Publisher's Perspective
- 6 Editor's Comments
- 12 Contractor of Choice

#### National Builders Show:

See this year's NAHB Pre-Show Guide on pages N1-N8.

DESIGN/BUILD BUSINESS on the Web: [www.dbbonline.com](http://www.dbbonline.com)

# Solar Showcase Beach Casa

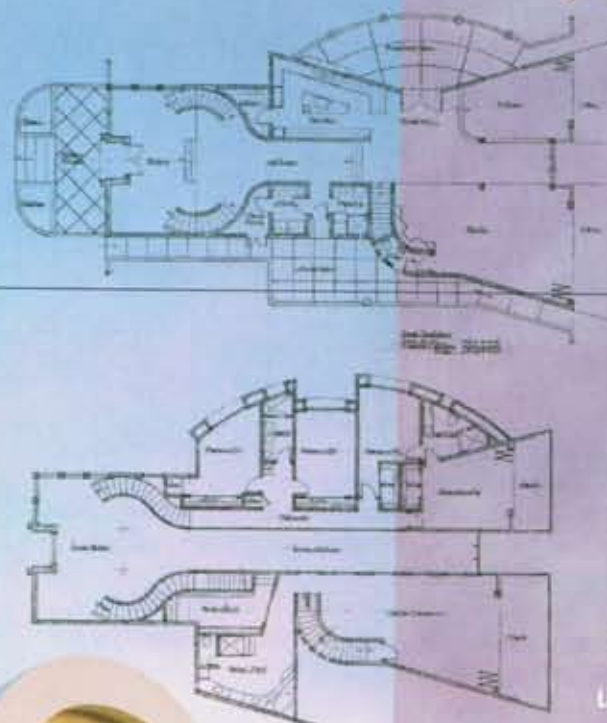
By Paula Doyle, Editor

**P**erched just steps above a sandy beach in Cabo San Lucas, Baja California, this getaway vacation home is an energy-autonomous beauty.

The home, built entirely of poured-in-place concrete, is on a remote site 20' above the beach. A Gold Nugget 2000 award of merit winner for energy efficiency, the house functions totally "off the grid" with power provided by photovoltaic panels installed on the roof.

The homeowner-parents of five active

boys wanted the house to be no more than a 10' drop to sand level. To achieve this goal, architect Thomas Drummond Jr. designed a sunken entry court and then stepped the home down inside to delineate the area changes. A rear 32' high glass wall with bi-fold glass doors enabled the integration of the desired indoor/outdoor floor plan without circulation barriers. The special glass wall, bolted together with stainless steel fasteners, was custom made in



**Beach Casa**  
Cabo San Lucas,  
Baja California  
Mexico

**Type of Project:**  
Custom Home

**Size of Project:**  
6,854 sq. ft.

**Cost of Project:**  
\$1,000,000

**Architect:**  
Thomas Drummond  
& Associates

**Contractor:**  
Cabo  
Development Group

**Landscape Architect:**  
Vivero Los Cabos

**Solar Consultant:**  
Independent Energy Solutions

**Awards:**  
2000 Gold Nugget Award of Merit For  
Energy Efficiency

**Specifications:**

**HVAC:** Mitsubishi Electric  
**Windows:** Window Master  
**Locksets:** Schlage  
**Sinks/Tubs/Toilets:** American Standard  
**Faucets:** Moen  
**Kitchen Sink:** Kohler  
**Kitchen Faucet:** Grohe  
**Oven:** GE Monogram  
**Refrigerator/Freezer:** GE  
**Dishwasher/Washer:** GE  
**Microwave Oven:** GE  
**Audio/Visual:** Sony/Mitsubishi  
**Intercoms:** Nutone  
**Lighting:** Halo



**Accelerate Your  
Design & Drafting!**



**Builders, Designers, Architects...**

If you still draw plans with a pencil or cumbersome CAD program, you'll love the speed and productivity of working with Chief Architect software. Draw your plans in a fraction of the time and create preliminary designs *while your clients watch!*

**Chief Architect 7.0 is the Answer!**

- ✓ Easy click-and-drag interface.
- ✓ Take clients on 3D virtual tours to clearly convey your ideas.
- ✓ Create fast, accurate plan sets.
- ✓ Generate your Materials Lists automatically!
- ✓ Make changes On-the-Fly!
- ✓ 90 Day Money-Back Guarantee!

**Call Today for Your  
Free Evaluation CD!**

**800 - 482 - 4433 ext. 70209**

ADVANCED RELATIONAL TECHNOLOGY, INC.

Tel: (208) 684-4204 • Fax: (208) 684-1316  
301 N. 3rd Street, Coeur d'Alene ID 83814  
**ART** [www.chiefarchitect.com](http://www.chiefarchitect.com)

Circle #11 for more information



Mexico City, trucked to Guadalajara, shipped to Cabo San Lucas and finally driven out to the site.

North- and east-facing window walls maximize views of the water and beach from the downstairs living areas. Windows were omitted from the western walls to eliminate excessive heat gain. No artificial lighting is required during the day because the windows provide so much natural daylight.

The divided staircase leading to the upstairs provides a natural separation from the four secondary bedrooms and three baths on the left and the master suite on the right. The luxurious master bath features a 6' Jacuzzi tub, dual vanities and terrazzo tile floor. Views of migrating whales can be seen from the bedroom windows as well as the master suite's private roof deck. The roof deck also provides private access



to the beach from the master bedroom.

Interior contemporary accents include the stainless steel railing on the stairs and the stainless steel appliances in the kitchen. The kitchen also features sleek back granite countertops. All of the furniture in the house was handmade in Mexico.

Propane is utilized for all gas requirements. A three-stage septic tank eliminates all waste. Two water tanks buried under the four-car garage hold water for all domestic and landscape use.

The expansive rear entertainment area includes a pool, patio, garage and special shed for beach "toys." This sunny, sustainable home will be a delight for its owners for generations. ♦

# Showers of praise

The all-in-one, ADA compliant, molded fiberglass shower comes with all the hardware you see. Plus quality you don't see. Because our thicker fiberglass material means these shower floors won't sink when you step into them.

So you get a product that's more durable and resilient than other units. All Florestone products are available for immediate delivery anywhere in North America. Call to request a copy of our full-line specifications binder and download CAD files from our website. Florestone...for those who don't take showers lightly.

800.446.8827  
FAX: 559.661.2070  
2851 Falcon Drive  
Madera CA 93637-9287  
www.florestone.com

**FLORESTONE**  
Quality Shower & Bath Products Since 1947



Residential & Commercial Tubs, Showers & Combinations; ADA Compliant;  
High Quality Acrylic, Fiberglass, Molded & Terrazzo Products

Circle #12 for more information